

For Lease

634 Laurier Street, Clarence-Rockland, Ontario



**SYNERCAPITAL**

Investment Realty, Brokerage & Asset Management



### Property Features

- Full space or Sub lease is available.
- Terms 1 – 2 years then month to month
- 4 – 6 month Pop-Up store proposals will be considered Terms available to be negotiated.
- Open main floor space with 1 full bathroom upstairs and a half bath downstairs.
- Put in some TLC to make the space how you want it.
- Being leased As-is Landlord incentives can be negotiated.
- Ample parking
- Allows for many uses :
  - \* Perfect for Car dealership or car rental facility
  - \* Retail store
  - \* Professional office
  - \* And much more.

Lease rate: 14.00 per sqft + Utilities  
1,351 sqft total

Main floor: 821.6 sqft      Top floor: 529.48 sqft

Synercapital Investment Realty, Brokerage..

Kwesi Bourne  
Broker

Tel: (613) 860-3500 ext. 410  
Fax: (613) 523-2931

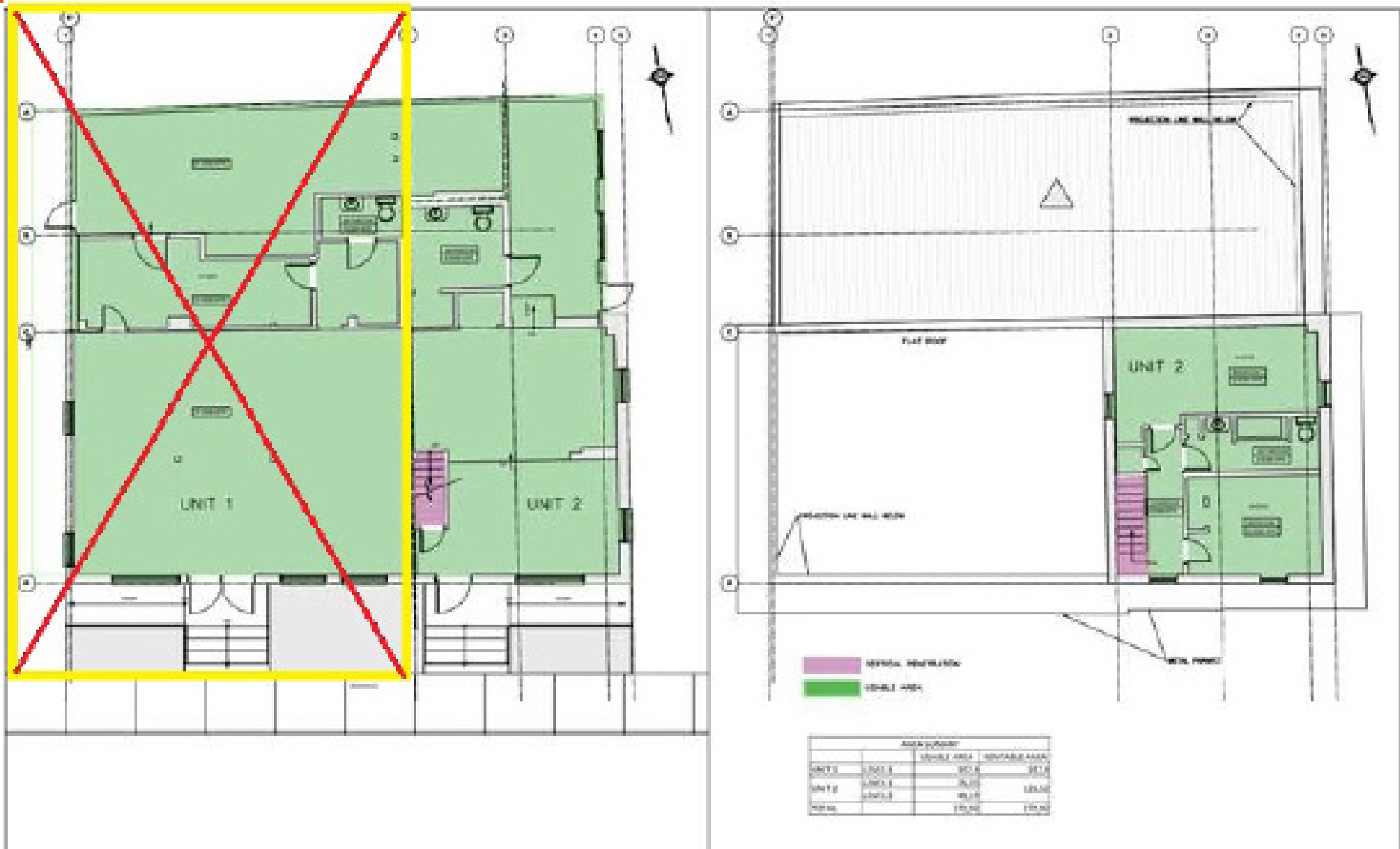
Email: [kbourne@synercapital.ca](mailto:kbourne@synercapital.ca)  
Website: [www.synercapital.ca](http://www.synercapital.ca)

DISCLAIMER: The information herein contained has been provided by the principals and sources which we deem reliable, but for which we assume no responsibility, and make no guarantees or warranties as to its accuracy. The information provided should be verified by you and your advisors, and is subject to change without notice.



For Lease

FLOOR PLAN



Synercapital Investment Realty, Brokerage..

Kwesi Bourne  
Broker

Tel: (613) 860-3500 ext. 410  
Fax: (613) 523-2931

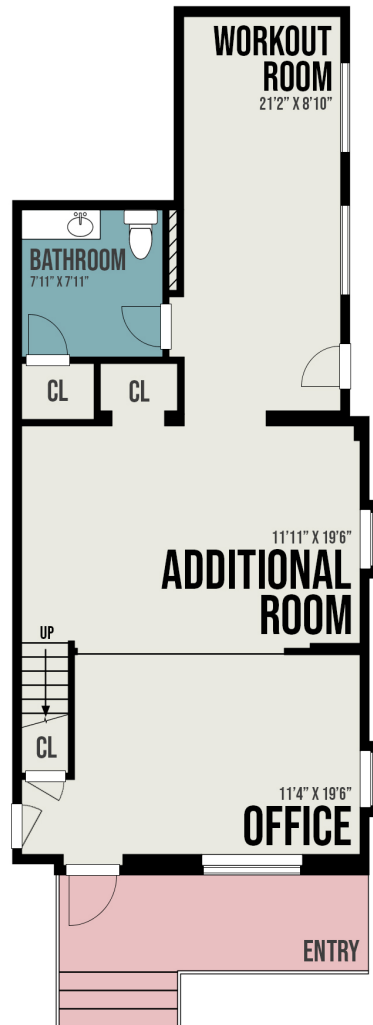
Email: [kbourne@synercapital.ca](mailto:kbourne@synercapital.ca)  
Website: [www.synercapital.ca](http://www.synercapital.ca)

DISCLAIMER: The information herein contained has been provided by the principals and sources which we deem reliable, but for which we assume no responsibility, and make no guarantees or warranties as to its accuracy. The information provided should be verified by you and your advisors, and is subject to change without notice.

For Lease

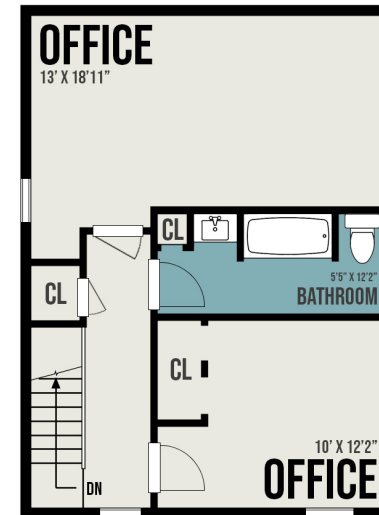
FLOOR PLAN

## 634 LAURIER ST - GROUND FLOOR



ALL DIMENSIONS, INCLUDING, BUT NOT LIMITED TO, WALL THICKNESS, ARE APPROXIMATE AND FOR INFORMATION PURPOSES ONLY. ALL DIMENSIONS ARE SUBJECT TO THE TERMS AND CONDITIONS SET FORTH IN THE OFFERING DOCUMENTS. ALL INFORMATION IS SUBJECT TO THE TERMS AND CONDITIONS SET FORTH IN THE OFFERING DOCUMENTS. ALL INFORMATION IS SUBJECT TO THE TERMS AND CONDITIONS SET FORTH IN THE OFFERING DOCUMENTS.

## 634 LAURIER ST - SECOND FLOOR



ALL DIMENSIONS, INCLUDING, BUT NOT LIMITED TO, WALL THICKNESS, ARE APPROXIMATE AND FOR INFORMATION PURPOSES ONLY. ALL DIMENSIONS ARE SUBJECT TO THE TERMS AND CONDITIONS SET FORTH IN THE OFFERING DOCUMENTS. ALL INFORMATION IS SUBJECT TO THE TERMS AND CONDITIONS SET FORTH IN THE OFFERING DOCUMENTS.

Synercapital Investment Realty, Brokerage..

Kwesi Bourne  
Broker

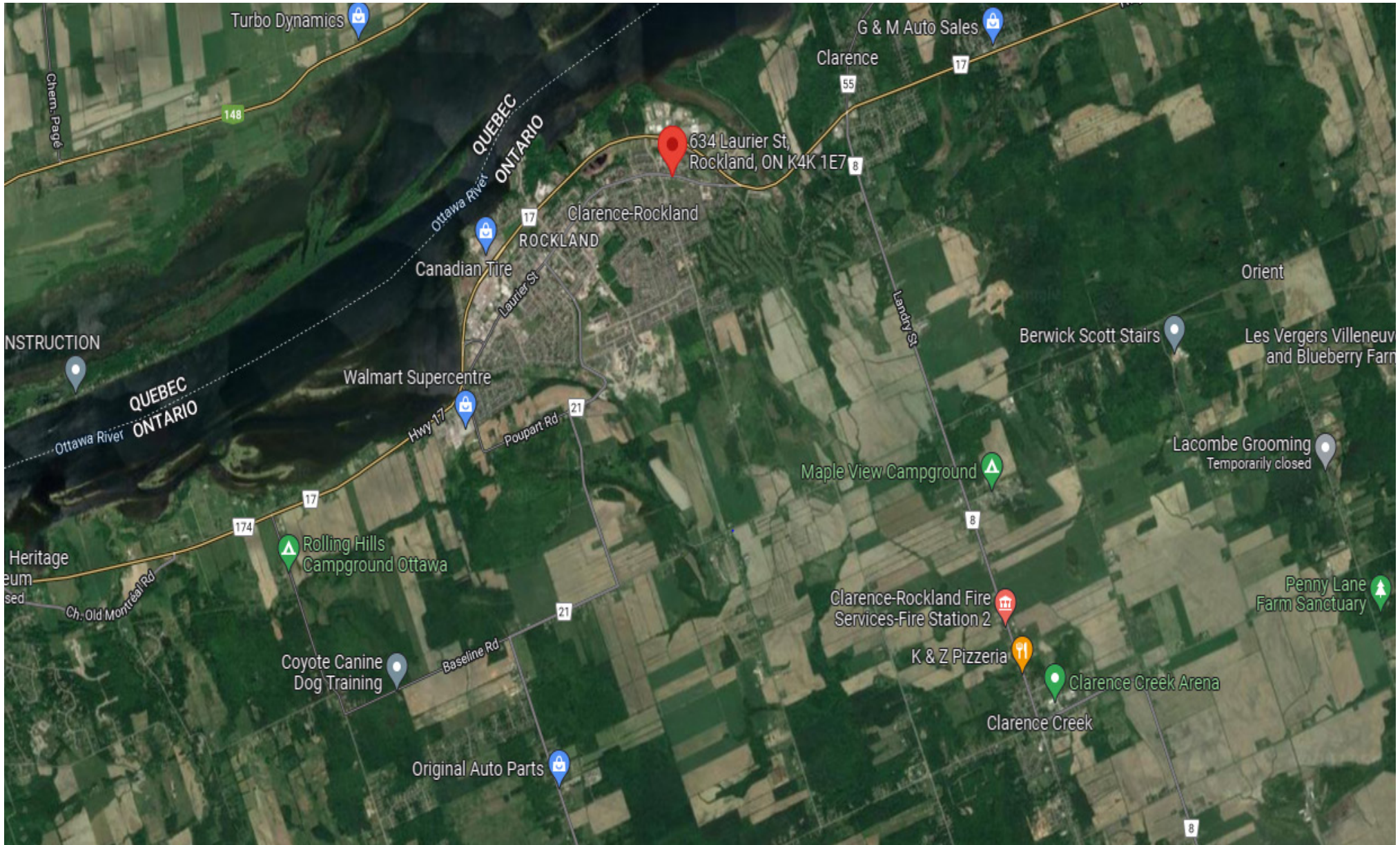
Tel: (613) 860-3500 ext. 410  
Fax: (613) 523-2931

Email: [kbourne@synercapital.ca](mailto:kbourne@synercapital.ca)  
Website: [www.synercapital.ca](http://www.synercapital.ca)

DISCLAIMER: The information herein contained has been provided by the principals and sources which we deem reliable, but for which we assume no responsibility, and make no guarantees or warranties as to its accuracy. The information provided should be verified by you and your advisors, and is subject to change without notice.

For Lease

MAP



Synercapital Investment Realty, Brokerage..

Kwesi Bourne  
Broker

Tel: (613) 860-3500 ext. 410  
Fax: (613) 523-2931

Email: [kbourne@synercapital.ca](mailto:kbourne@synercapital.ca)  
Website: [www.synercapital.ca](http://www.synercapital.ca)

DISCLAIMER: The information herein contained has been provided by the principals and sources which we deem reliable, but for which we assume no responsibility, and make no guarantees or warranties as to its accuracy. The information provided should be verified by you and your advisors, and is subject to change without notice.

For Lease

EXTERIOR



Synercapital Investment Realty, Brokerage..

Kwesi Bourne  
Broker

Tel: (613) 860-3500 ext. 410  
Fax: (613) 523-2931

Email: [kbourne@synercapital.ca](mailto:kbourne@synercapital.ca)  
Website: [www.synercapital.ca](http://www.synercapital.ca)

DISCLAIMER: The information herein contained has been provided by the principals and sources which we deem reliable, but for which we assume no responsibility, and make no guarantees or warranties as to its accuracy. The information provided should be verified by you and your advisors, and is subject to change without notice.

For Lease

INTERIOR



Synercapital Investment Realty, Brokerage..

Kwesi Bourne  
Broker

Tel: (613) 860-3500 ext. 410  
Fax: (613) 523-2931

Email: [kbourne@synercapital.ca](mailto:kbourne@synercapital.ca)  
Website: [www.synercapital.ca](http://www.synercapital.ca)

DISCLAIMER: The information herein contained has been provided by the principals and sources which we deem reliable, but for which we assume no responsibility, and make no guarantees or warranties as to its accuracy. The information provided should be verified by you and your advisors, and is subject to change without notice.

For Lease

INTERIOR



Synercapital Investment Realty, Brokerage..

Kwesi Bourne  
Broker

Tel: (613) 860-3500 ext. 410  
Fax: (613) 523-2931

Email: [kbourne@synercapital.ca](mailto:kbourne@synercapital.ca)  
Website: [www.synercapital.ca](http://www.synercapital.ca)

DISCLAIMER: The information herein contained has been provided by the principals and sources which we deem reliable, but for which we assume no responsibility, and make no guarantees or warranties as to its accuracy. The information provided should be verified by you and your advisors, and is subject to change without notice.



For Lease

INTERIOR



Synercapital Investment Realty, Brokerage..

Kwesi Bourne  
Broker

Tel: (613) 860-3500 ext. 410  
Fax: (613) 523-2931

Email: [kbourne@synercapital.ca](mailto:kbourne@synercapital.ca)  
Website: [www.synercapital.ca](http://www.synercapital.ca)

DISCLAIMER: The information herein contained has been provided by the principals and sources which we deem reliable, but for which we assume no responsibility, and make no guarantees or warranties as to its accuracy. The information provided should be verified by you and your advisors, and is subject to change without notice.



# SYNERCAPITAL

Investment Realty, Brokerage & Asset Management

 613.860.3500

 [synercapital.ca](http://synercapital.ca)